

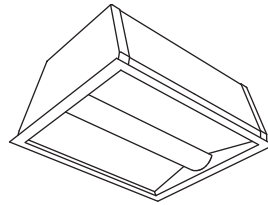
PureFX[®] Micro



Recessed Micro

1'x1'

2 CFL (13W)



Project Name

Spec Type

Notes

Order Guide

Some combinations of product options may not be available. Consult factory for assistance with your specification.

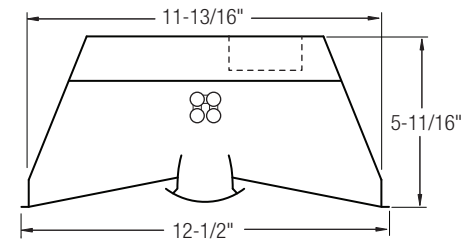
9411			C213	-		-		-		-	
Product Series & Size PureFX Micro 1'x1'	Version D1 Standard T-Grid or Drywall	Configuration ST Standalone	Lamping 2 CFL (13W) DTT/GX-24q-1	Housing S Standard (22ga.) N New York (20ga.) C Chicago Plenum	Wiring 1 1 cct 5 1 cct w/ Battery Pack 7 1 cct Dimming	Voltage 1 120V 2 277V 3 347V*	Ballast E Standard Ballast				
	See details on reverse				Consult website for complete list of standard wiring options	*Note: Some options may not be available for each configuration. Consult factory for details.	Consult Ledalite for ballast manufacturer information				

Upgrades & Accessories

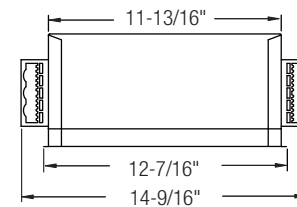
Please indicate with check mark.

- Lamps Included
- Hanger Kit
See details on reverse

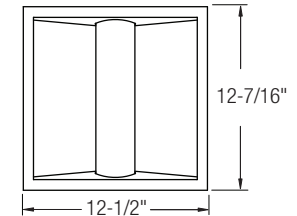
Cross Section



Side View



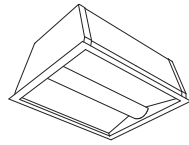
Side (Housing)



Top (Lens Frame)

PureFX[®] Micro

Recessed Micro
1'x1'
2 CFL (13W)



Photometry

Report Summary

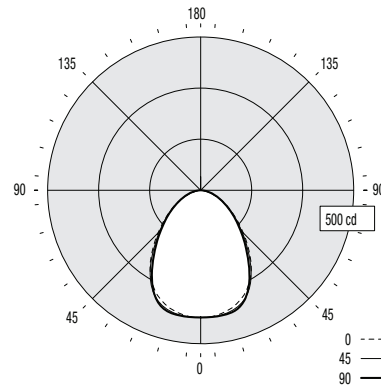
Report # LTL13618
Filename 9411D1C213.ies
Efficiency 54.4%

Spacing Criteria 1.2 @ 0° along
1.2 @ 90° across

Meets RP-1-04 recommendations for VDT-Intensive spaces

Candela Distribution

Vertical Angle	Horizontal Angle					Zonal Lumens
	0	22.5	45	67.5	90	
0	415	415	415	415	415	
5	414	414	415	415	415	41
15	397	400	405	409	410	115
25	357	362	367	366	364	167
35	287	287	282	273	269	175
45	197	194	190	185	183	148
55	126	123	121	120	120	110
65	72	71	70	72	72	71
75	28	30	32	35	37	36
85	4	6	7	8	9	9
90	0	0	0	0	0	



Coefficients of Utilization (%)

Ceiling:	80				70				50				0			
	70	50	30	10	70	50	30	10	70	50	30	10	70	50	30	10
0 RCR	64	64	64	64	63	63	63	60	60	60	60	54				
1	59	57	55	53	58	56	54	54	52	51	47					
2	55	51	47	45	53	50	47	48	45	43	40					
3	50	45	41	38	49	44	41	43	40	37	35					
4	46	41	36	33	45	40	36	39	35	32	31					
5	43	37	32	29	42	36	32	35	31	29	27					
6	40	33	29	26	39	33	29	32	28	25	24					
7	37	30	26	23	36	30	26	29	26	23	21					
8	35	28	24	21	34	28	24	27	23	21	19					
9	33	26	22	19	32	26	22	25	21	19	18					
10	31	24	20	17	30	24	20	23	20	17	16					

Based on a floor reflectance of 0.2

Avg. Luminance (cd/m²)

Vertical Angle	Horizontal Angle		
	0	45	90
55	2793	2682	2660
65	2166	2106	2166
75	1375	1572	1817
85	583	1021	1313

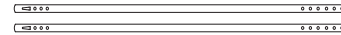
IES files for this and other photometric options can be downloaded online at www.ledalite.com

Additional Information

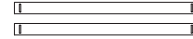
Optional Hanger Kit

Kit includes:

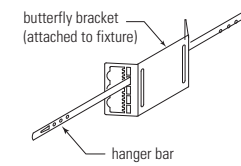
2x 27" hanger bars



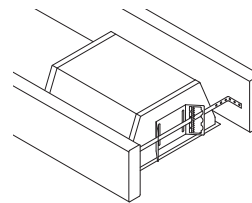
2x redirection bars*



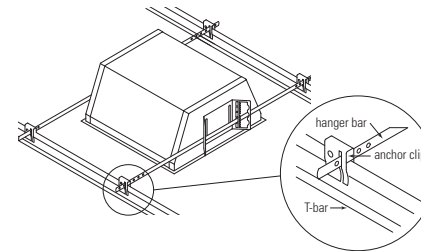
4x T-bar anchor clips



Mounted to Joists



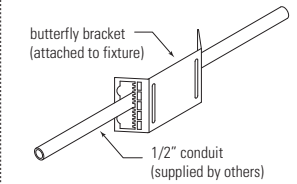
Mounted to T-Bar Grid



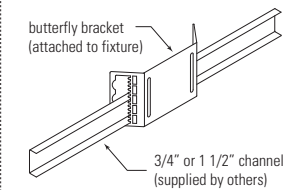
*If required, redirection bars enable mounting 90° from fixture's default orientation

Alternate Mounting Methods

Conduit



Channel



Specifications

Due to continuing product improvements, Ledalite reserves the right to change specifications without notice.

Housing

Die-formed, post-painted, 22 gauge cold-rolled steel (New York City version is 20 gauge).

Weight

Maximum 7.1 lb.

Optical System

Optical assembly consists of flat acrylic panels and extruded curved acrylic lens. A protected MesoOptics[®] film layer creates optimal light distribution and high efficiency. The optical frame is constructed from die-formed, spot-welded, 22 gauge cold-rolled steel assembled together with extruded aluminum profiles in a sturdy frame. The frame allows tool-free access to the inside of the fixture by way of expansion springs. Maintenance can be performed from below the ceiling.

Mounting

Fixture is compatible with most common T-bar ceiling types and non-accessible ceilings. Butterfly mount brackets (attached to housing) are designed to work with optional hanger kit, or with EMT conduit or metal channel (supplied by others). Brackets allow post-installation adjustment of fixture height. Optional hanger kit includes hanger bars, T-bar anchor clips and redirection bars to enable mounting 90° from the fixture's default orientation.

Ballast

Electronic. Supplied with pre-installed ballast disconnects as per changes to the National Electric Code.

Wiring

Multiple wire entrances are available (top or side) to allow easy wiring access. Available with battery pack. Consult factory for details.

Approvals

Certified to UL & CSA Standards.
City of Chicago Approved CCEA (housing option C).
Designed to comply with NYC code requirements (Housing Option N).

Finish

Housing and frame are post-painted, high quality powder coat. Available in white only.

IMPORTANT: Fixtures are rated for non-IC installations only. Do not install insulation within 3" (76 mm) of any part of the luminaire.